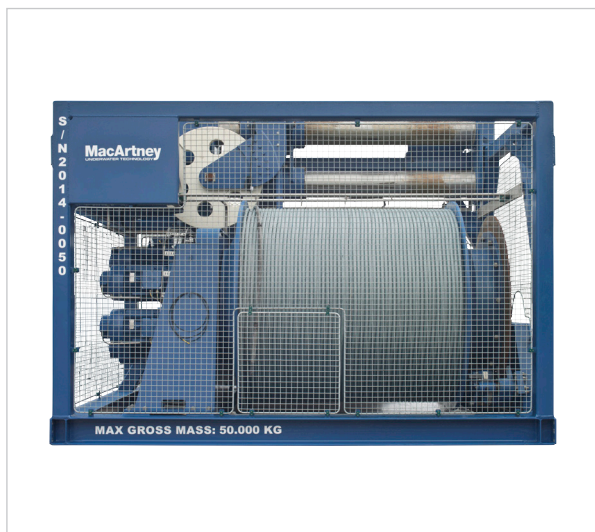


MERMAC R

Remotely operated vehicle (ROV) winch series



MacArtney MERMAC R electrically driven winches are robust and advanced vehicle-handling systems that safely control the launch, operation, and recovery of work-class and inspection ROV systems.

MERMAC R winches are designed to be dependable, offer high performance, and be easy to use. They are available in standard and custom configurations and can easily be combined with launch and recovery or moon pool handling systems. All MERMAC R winches are compact and modular systems. Several components are standardised, making it easy to specify, adapt, or upgrade to the required performance and capacity.

MERMAC R winches are available with active heave compensation (AHC) which immediately compensates for vessel movement caused by waves, even in heavy seas. This feature reduces weather-related downtime and makes launch and recovery of tethered equipment easier and safer.

MERMAC R winches can be delivered with a remote diagnostics tool, allowing MacArtney technicians to remotely monitor and troubleshoot several winch functions in real time. This unique feature offers customers and operators substantial cost savings by eliminating unnecessary offshore engineering support.

Features and benefits

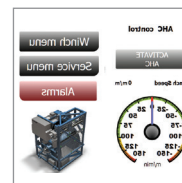
- Compact and modular design using standardised and exchangeable components
- Designed for easy integration with launch and recovery and moon pool handling systems
- All structural components in painted carbon steel
- Integrated protection frame and grating
- Frame-mounted main switchbox
- Electrically driven level wind
- Designed according to DNV-ST-0378
- ILO 152 lifting frame
- Long and proven track record
- Low noise operation

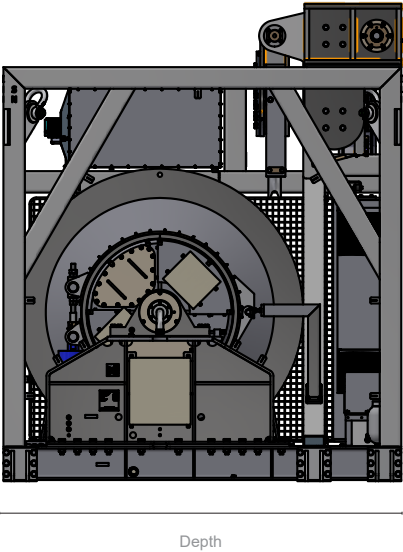
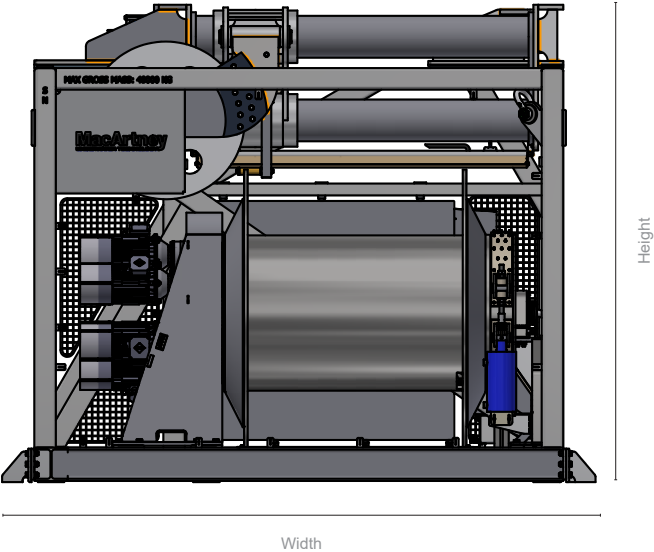
Applications

- Work-class ROV systems
- Inspection-class ROV systems
- Towed underwater vehicles and systems
- Subsea installations
- General marine instrumentation and applications
- Subsea crane
- Piston corer handling

System options

- Active heave compensation (AHC)
- Right-angle level wind
- Remote diagnostics tool
- Service and maintenance programme
- Spare parts package
- Remote control with joystick and emergency stop
- Remote control with joystick, emergency stop and display for indication of deployed cable length and speed
- Wireless remote control with joystick and emergency stop
- Cable status indicator (speed and length)
- A-frame, davit or deck crane
- LeBus sleeves
- Cable sheave
- Moog Focal electric/electro-optical slip ring model 176
- Fork lift pockets
- Tarpaulin cover
- Internal/external umbilical cooling
- Other cable diameters available upon request
- System certification to DNV-ST-0378
- Lifting certification to DNV-ST-E2.7-3 R30





Specifications

	Winch dimensions (Width/depth/height)	Drum dimensions (Core/flange x length)	Cable OD	Cable capacity (Length)	Winch weight	Pull (Layer 1)	Speed (Layer 1)	Motor size	Power supply
model	mm	mm	mm	m	kg	kN	m/min	kW	V
MERMAC R15	2,420/2,666/2,814	ø1000/ø1600 x 1140	17.3-31	3,900-1,070	7,500	49.5	0-38	2 x 22	3x400/440
MERMAC R25 AHC	3,784/3,135/2,260	ø1,300/ø1,900 x 1834	25-35	3,700-1,540	19,000	100	0-72	3 x 55	3x400/440
MERMAC R40 RA AHC	4,967/3,995/3,330	ø1,300/ø2,400 x 1,800	30-40.7	5,675-2,800	23,000	195	0-72	6 x 45	3x400/440
MERMAC R50 RA AHC	5,520/4,000/3,330	ø1,300/ø2,400 x 2,304	30-40.7	7,200-3,650	23,500	195	0-72	6 x 45	3x400/440

Subject to change without notice. Visit MacArtney.com for latest revision